

Choose from 2 easy ways to register for Outdoor tours:

***In Person**

Stop by the Outdoor Recreation office, located at Building 719!

***Telephone 263-4671**

Give us a call Sunday through Saturday, 9:30 A.M.~ 5:30 P.M. We are closed for all U.S Federal Holidays.

Cancellation & Refund Policy

Outdoor Recreation shall provide a full refund for all tours cancellations received at least 72 hours prior to the start of the tour for all tours departing after 6 A.M. For cancellations received 4 full business days prior to the departure date for tours departing before 6 am, unless otherwise indicated on the itinerary.

Children Policy

Children (Ages 17 & under) & out of high school must be accompanied by a parent/guardian on all tours. *Age limitations may vary on each tour. Please check with our tour staff when signing up on a tour.

Receive our tour brochure monthly via E-Mail!

*By signing up for our email distribution, you will receive our brochure as well as any updates on any changes that are made to the schedule!

Please send an email with "Tour Brochure Request" in the subject line to the following address: zamaodr@gmail.com.

MLC/IHA/自衛隊の方も是非ご参加ください。
ご予約、お問い合わせは軍電263-4671まで。

MLC/IHA/JGSDF employees are welcome to join.

Give us a call at 263-4671 for more information and to reserve your spots!

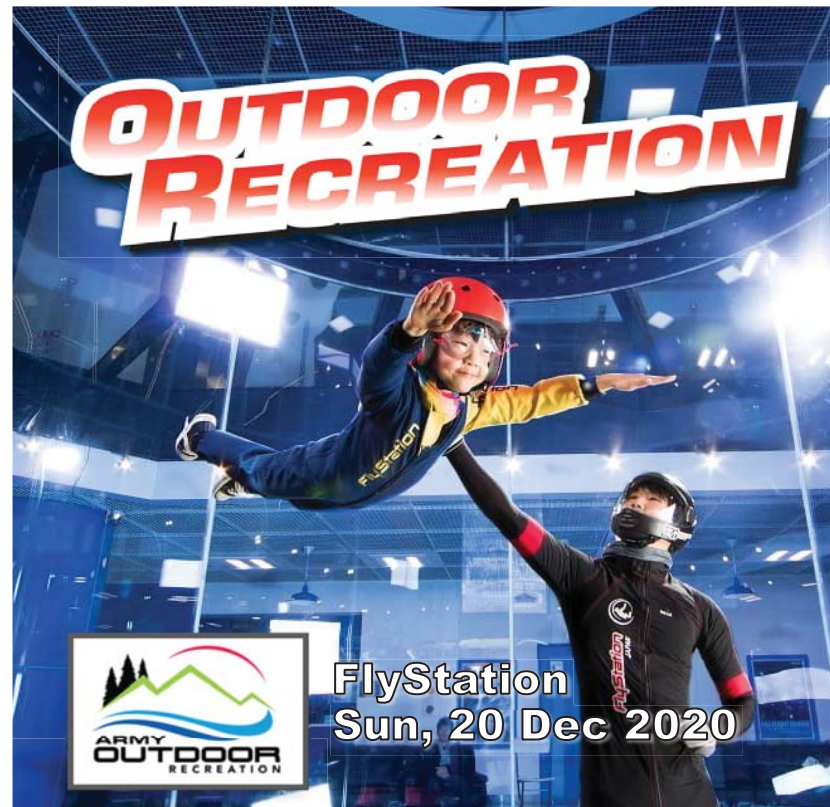


=== Before signing up climbing/hiking trips ===

Please consider your physical fitness. We do not recommend to participate climbing/hiking trips if you have knee, heart problems, asthma and any other illness.



DFMWR strives to provide individuals with disabilities reasonable accommodation, and are included in all community recreation program planning, as appropriate for the activity. For further information, please contact the activity manager on accommodations.



>>>DECEMBER LINE UP

Sat. 05	(0500-1530)	Mt. Katsuragi Hiking
Sat. 12	(0500-1530)	Deep Sea Fishing
Sat. 19	(0630-1700)	Yuki Town Walking
Sun. 20	(0730-1630)	FlyStation
Sat. 26	(0600-1630)	Shirahama Aloe Walking

DECEMBER 2020

Mt. Katsuragi Hiking

Saturday, 05 December 2020
Depart: 0500/ Return: 1530



Our hike starts from Nagahama entrance, where Izu Mito Sea Paradise is located. A steep uphill climb will start for about 60 minutes from the beginning to the view point. You will be in awe by the amazing sight of Suruga Bay, Mt. Fuji, Awashima Island and the coast line of Numazu City. We will keep walking for 30 minutes and arrive at the summit of Mt. Hottan-jouzan. Take a break at the summit then we will walk towards Mt. Katsuragi for 70 minutes until we will reach the entrance of Mt. Katsuragi. The Mt. Katsuragi entrance to the summit will be very steep. The summit is organized as a panorama park. We will have free time at the summit. You can enjoy the beautiful scenery, relax at the lounge and foot spa, have fun at the obstacle courses and munch delicious foods. Descending is very easy! We will jump on the ropeway and it takes us to the parking lot where the MWR bus will be waiting.

>>>Mt. Katsuragi: 452m/1,483ft, approximately 4km/2.48mi, 160 minutes, max elevation 443m/1,453ft

***It is for ages 10 and up.**

***You might need to descend the mountain for 30 minutes if the ropeway is not running due to strong wind.**

Wear: Trekking shoes, appropriate clothing for hiking, Cap/hat

Bring: Rain suit, Sunscreen, Sunglasses, Towel, (Trekking poles), Water/Snacks, (Change of clothes), Yen for lunch (or bring own packed lunch) and anything you may need.
Cost: Adult (12+) \$62, Youth (10-11) \$56 **(Ropeway ride, Guide, Transportation included)**

You must wear a face mask while on the MWR bus

Social distance enforced for all tours

***Tour may be subjected to changes/
 cancellation due to inclement weather or
 HPCON***

Deep Sea Fishing >>>Tilefish

Saturday, 12 December 2020
Depart: 0500/Return: 1500

***Sign up by Wed, 18 November 2020**



Have fun winter fishing at Kugenuma! Our target, Tilefish is fun to fish and delicious to eat!

***It is limited to ages 12 and up.**

***It may be cancelled with short notice due to inclement weather/ocean condition.**

Schedules, locations, prices and targets are subject to change.

Wear/Bring: See Itinerary

Cost: Adult (12+) \$159 **(Boat fee, Rental Fishing pole, Tackle, Bait, Ice chest, Escort, Transportation included)**

Yuki Town Walking

Saturday, 19 December 2020
Depart: 0630/ Return: 1700



Yuki Town flourished as a castle town since Kamakura era. Let's stroll through the historical town developed as a fabric industry. First, we will have a 30-minute weaving experience and make your own coaster. Then walk around the streets lined with ancient warehouse-style stores. They were built at the end of Edo period and are used as shops, breweries, storehouses and cafes. Enjoy shooting classic scenery, munching on local delicacies and shopping the specialty items!

***It is for ages 6 and up.**

***Schedules, locations and prices are subject to change without notice.**

Wear: Comfortable shoes and clothing to walk, Cap/hat.

Bring: Rain gear, Water/snacks, Towel, Yen for lunch and anything you may need.

Cost: Adult/Child (6+) \$58 **(Coaster making fee, Guide, Transportation included)**

FlyStation

Sunday, 20 December 2020
Depart: 0730/Return: 1630

***Sign up by Mon, 14 Dec 2020!!!**



Enjoy drifting in the air at the only indoor skydiving facility in Japan, FlyStation! You can fly up to 18 meters with the instructors as well. Let's catch some air.

***It is for ages 4 and up, weight less than 90kg (198lb).**

***Pregnant cannot participate in this activity.**

***Schedules, prices and locations are subject to change without notice.**

Bring: Yen for DVD purchase, Lunch and anything you may need.

Cost: Adult/Child (4+) 144 **(Flight fee, Instructor, Rental Gear (Flight suit, shoes, helmet, goggles), Escort, Transportation included)**

Shirahama Aloe Walking

Saturday, 26 December 2020
Depart: 0600/ Return: 1630



Let's enjoy a short walk along Shirahama, one of the most beautiful white sand beaches in Japan! This time of the year, the trail is surrounded with amazingly beautiful red aloe flowers that contrast the white sand and blue sky/ocean. The walk is about one hour until you reach the Aloe Village where the aloe festival will be held. Taste & purchase aloe/local products!

***It is for ages 6 and up.**

***Flowers are weather dependent. We cannot guarantee flowers are in bloom.**

***Festival may be cancelled due to COVID-19/weather condition. Our tour will not be cancelled even the festival is cancelled.**

Wear: Comfortable shoes and clothing to walk, cap/hat.

Bring: Rain gear, Windbreaker, Water/snack Towel, Yen for lunch and anything you may need.

Cost: Adult/Child (6+) \$41 **(Guide, Transportation included)**